

# T-SHIRTS & TOPS





# LIFESTYLE V-NECK T-SHIRT

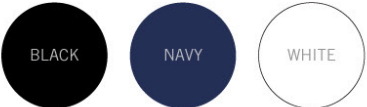
URBAN UNISEX STYLE: **CTV3**

FABRIC: Combed polycotton - single knit (140g)



HEAVYWEIGHT UNISEX STYLE: **CTV4**

FABRIC: Solid colours - 100% Combed cotton - single knit (160g)  
Melange colours - Combed polycotton - single knit (160g)



ADULT SIZES: XS - S - M - L - XL - 2XL - 3XL - 4XL - 5XL

FEATURES:



Size tag with removable GLOBAL CITIZEN label

Comfortable V-neck line perfect for neck label branding

Quality fabric with reactive dyed cotton fibres

Regular modern fit



REACTIVE DYED





LIFESTYLE TEE FEATURES:



Size tag with removable GLOBAL CITIZEN label

Comfortable scooped neck line perfect for label branding

Quality fabric with reactive dyed cotton fibres

Regular modern fit





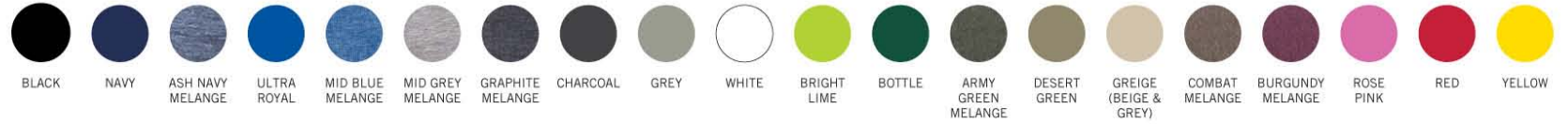
# LIFESTYLE T-SHIRTS



## URBAN UNISEX STYLE - ADULTS: CTH5

FABRIC: Combed polycotton - single knit (140g)

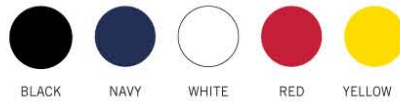
SIZES: XS - S - M - L - XL - 2XL - 3XL - 4XL - 5XL



## URBAN UNISEX STYLE - YOUTH: CTH7

FABRIC: Combed polycotton - single knit (140g)

YOUTH SIZES: 3/4yr - 5/6yr - 7/8yr - 9/10yr - 11/12yr

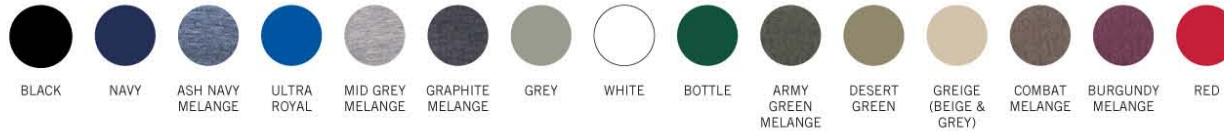


## HEAVYWEIGHT UNISEX STYLE - ADULTS: CTH6

FABRIC: SOLID COLOURS - 100% Super Cotton - single knit (160g)

MELANGE COLOURS - Polycotton

SIZES: XS - S - M - L - XL - 2XL - 3XL - 4XL - 5XL



# 145G CLASSIC COTTON T-SHIRT

---

UNISEX STYLE: **CTH201**

FABRIC: 100% Cotton - single knit

ADULT SIZES: S - M - L - XL - 2XL - 3XL - 4XL - 5XL

**FEATURES:**

- Double stitched hem and sleeves
- Taped shoulders and neckline
- Short sleeve with 1x1 neck rib



BLACK



NAVY



# RACERBACK TOP

LADIES' STYLE: **LRB1**



ADULT SIZES: S - M - L - XL - 2XL - 3XL

FABRIC: Polycotton interlock (195g)

## FEATURES:

- Stretchy polycotton interlock fabric created from the best quality yarns for coolness and durability
- Bound armhole and neckline
- Double stitched hem
- Curved waistline



COLOURS AVAILABLE:



# LIFESTYLE VESTS

MENS' STYLE: **MVC1**

LADIES' STYLE: **LVC4**



FABRIC: Combed polycotton - single knit (140g)

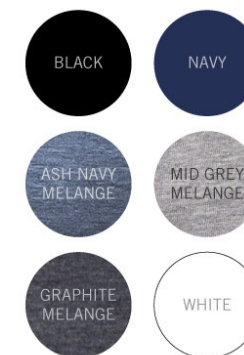
ADULT SIZES: XS - S - M - L - XL - 2XL - 3XL

## FEATURES FOR BOTH STYLES:

- Size tag with removable GLOBAL CITIZEN label
- Slim fit and slight stretch
- Quality fabric with reactive dyed cotton fibres
- Comfortable scooped neckline and neck yoke perfect for label branding



COLOURS AVAILABLE:



REACTIVE DYED





**ULTIMATE**  
**T**  
**LTD**



# FASHION FIT T-SHIRTS

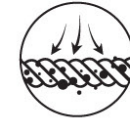
MEN'S SHORT SLEEVE: **CTL1**  
MEN'S LONG SLEEVE: **CTL4**  
LADIES' SHORT SLEEVE: **LTL1**  
LADIES' LONG SLEEVE: **LTB4**

FABRIC: SOLID COLOURS - 100% Super Cotton - single knit (150g)  
MELANGE COLOURS - Polycotton

ADULT SIZES: S - M - L - XL - 2XL - 3XL (Men's short sleeve available in XS)

## FEATURES:

- Slim fit
- Size tag with no branding and comfortable scooped neckline and neck yoke perfect for label branding
- Removable label in side seam
- Quality fabric with reactive dyed cotton fibres
- Short sleeve style has contrast neck tape



REACTIVE DYED



## COLOURS AVAILABLE IN SHORT SLEEVE:



## COLOURS AVAILABLE IN LONG SLEEVE:







# COOLMAX® SPORTS T-SHIRT

UNISEX STYLE: **MMT5**



FABRIC: Mesh polyester (96% COOLMAX® polyester, 4% LYCRA® Elastane)

ADULT SIZES: S - M - L - XL

## FEATURES:

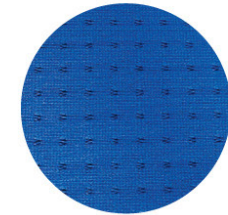
- Moisture wicking
- Eyelet design allows maximum breathability
- Engineered for everyday comfort and performance
- Quick dry
- Authentic COOLMAX® swingtag



MOISTURE WICKING



WASH & WEAR



Breathable eyelet design



ROYAL



ROYAL/BLACK



BLACK/ROYAL



YELLOW



NAVY/GREY



GREY/NAVY



COOLMAX® is a trademark of The LYCRA Company

# LIFESTYLE SPORTS T-SHIRT

UNISEX STYLE: **MMT6**



FABRIC: 100% Polyester Interlock - 155g

ADULT SIZES: XS - S - M - L - XL - 2XL - 3XL

## FEATURES:

- Moisture wicking
- Modern sports fit
- Ideal for sporting activities and team building events
- High quality moisture management fabric creates a cool, dry zone next to the skin
- Removable label allows branding freedom



MOISTURE WICKING



WASH & WEAR





# CLASSIC SPORTS T-SHIRTS

ADULT STYLE: **MMT4**

YOUTH STYLE: **KMT4**



FABRIC: 100% polyester honeycomb eyelet (130g)

ADULT SIZES: S - M - L - XL - 2XL - 3XL

YOUTH SIZES: 4-5y, 5-6y, 6-7y, 7-8y, 8-9y, 9-10y, 10-11y, 11-12y, 12-13y



MOISTURE WICKING



WASH & WEAR

FEATURES:



Contrast neck tape

High quality moisture wicking fabric which creates a cool, dry zone next to the skin

Crease resistant fabric with eyelets:

COLOURS AVAILABLE IN ADULTS' STYLE:



COLOURS AVAILABLE IN YOUTH STYLE:





Moisture Management  
**ULTIMATE**  
**T**